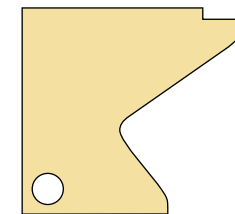
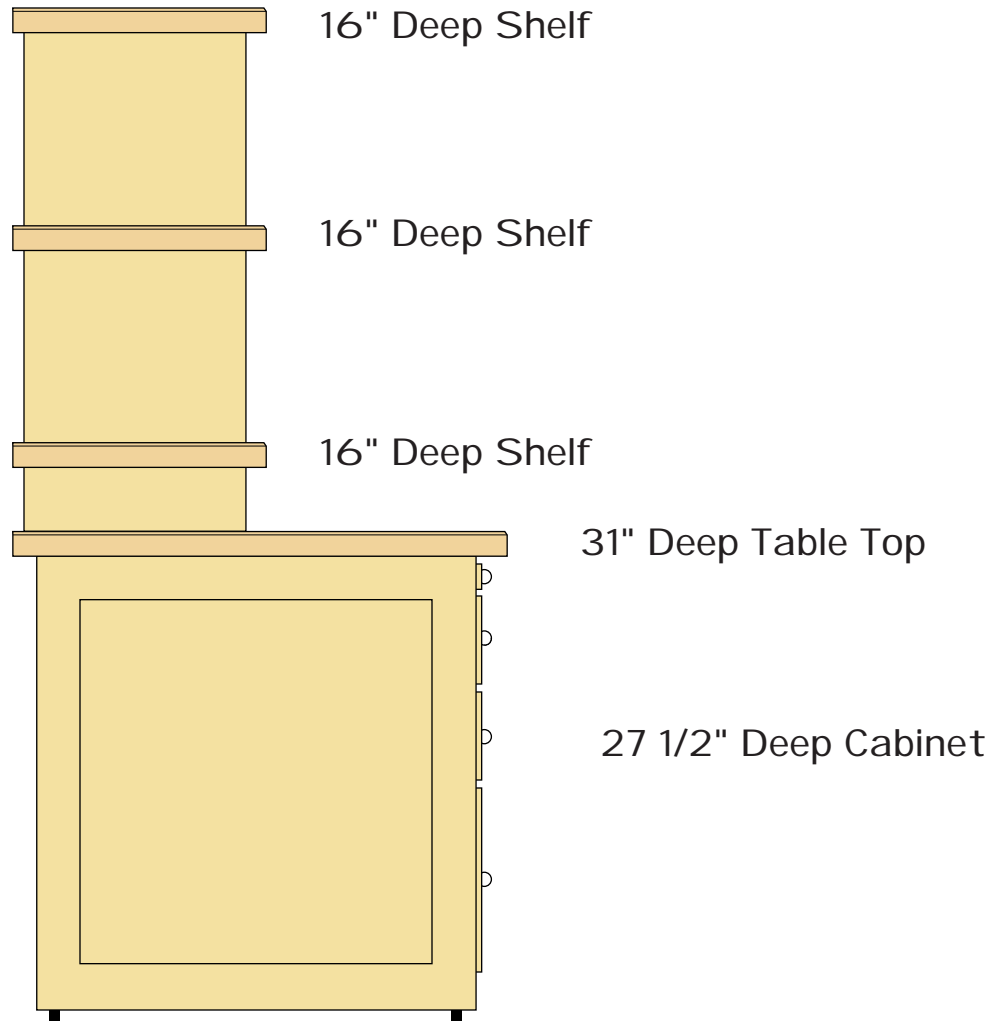


Cabinet Elevations and Details

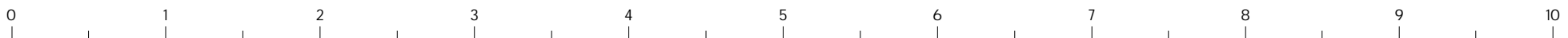
Drawn: 9-1-99 KK5IM

Shelf Details:

- (1) Cut 1 piece of 3/4" plywood to the exact size of your shelf. Cut another but add 1/4" to each dimension.
- (2) Laminate the pieces together with contact cement. When the cement has set, fit your router with a deep cutting (2") flush cut bit with roller bearing guide. Using the undersize piece as a guide, trim off the excess. This will insure a clean edge on all four sides.
- (3) Apply Formica or Masonite to the top with contact cement and trim in the same manner.
- (4) Make the edge trim from 4/4 birch, oak or other suitable hardwood. Ease the top edge with a 45-degree router bit or roundover. Miter corners and apply to top.
- (5) The edge dressing adds considerable dimensional stability to the shelf!



Interior Partitions
(Make from 3/4" Material)
(Bore hole for cables)



SCALE: 1" = 1' 0"